

## Vertex Plus AX

new preparative KNAUER columns with axial compression



How satisfied are you with your current preparative column performance and reproducibility?

How long is your preparative column life time?

### What are Vertex Plus AX columns?

The new preparative columns from KNAUER are a product of choice for every HPLC user who needs highest performance as well as robust and long lasting columns in preparative range. The column hardware realizes axial compression of the column bed to get long lasting columns with excellent performance.

### Which column dimensions are available?

The new preparative column hardware can be offered with three different internal diameters:

- 20 mm ID with 1/16" capillary
- 30 mm ID with 1/8" capillary
- 50 mm ID with 1/8" capillary

The Vertex Plus AX column length will start with a

- 30 mm precolumn.
- 150 mm and
- 250 mm column length is the typical bed length for the main column.



### What are the advantages of Vertex Plus AX?

new preparative HPLC columns with adjustable end fitting  
 consistent performance for extended time period by readjustment of column fitting  
 optimum packed bed density and stability in a universal design  
 available with KNAUER and NON-KNAUER column materials  
 flexibility in column design makes it suitable for any media

### What are the preparative working parameter?

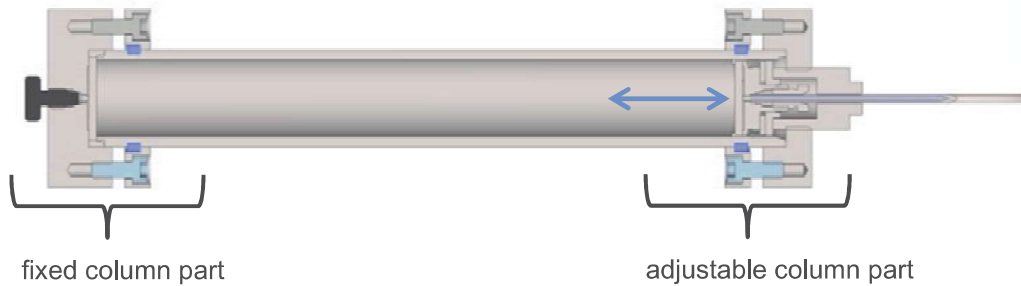
Column dimension	Column Volume [ml]	Scale up factor*	Loadability [mg]	recommended flow rate [ml/min]
150 x 20 mm ID	33	18.9	20-80	20
250 x 20 mm ID	55	18.9	20-80	20
150 x 30 mm ID	79	42.5	40-160	45
250 x 30 mm ID	132	42.5	40-160	45
150 x 50 mm ID	206	118	80-350	120
250 x 50 mm ID	344	118	80-350	120

\*reference 4.6 mm ID



**What is the technical principle behind Vertex Plus AX?**

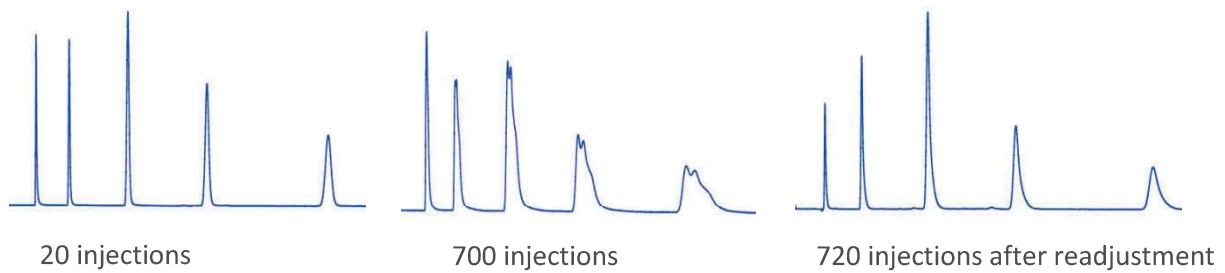
Up to 30% (25-40 mm) of the column bed length can be readjusted via the adjustable column screw.



**What characterizes the Vertex Plus AX life time?**

- 1) Column using with highest packing quality
- 2) readjustment of the Vertex Plus AX column bed after demanding conditions
- 3) reconstituted column performance for a longer life time

Example for Column Readjustment (2) of a 250 x 20 mm Vertex Plus AX column



**How can I order the Vertex Plus AX columns?**

Length [mm]:		30**	150	250
ID [mm]:	20 mm	03P.....	15P.....	25P.....
	30 mm		15Q.....	25Q.....
	50 mm*	03R.....	15R.....	25R.....

\*\*recommended precolumn (30 x 20 mm ID can be used for 20 and 30 mm ID columns)

Eurospher II	5 µm	10 µm	15 µm	20/45µm
C18 P	...E182E2J	...E182E2N	...E182E2Q	...E182E2X
C18 H	...E185E2J	...E185E2N	...E185E2Q	...E185E2X
C18 A	...E184E2J	...E184E2N	...E184E2Q	...E184E2X
C18	...E181E2J	...E181E2N	...E181E2Q	...E181E2X
C8	...E081E2J	...E081E2N	...E081E2Q	...E081E2X
Phenyl	...E050E2J	...E050E2N	...E050E2Q	...E050E2X
C4	...E041E2J	...E041E2N	...E041E2Q	...E041E2X
NH <sub>2</sub>	...E190E2J	...E190E2N	...E190E2Q	...E190E2X
CN	...E200E2J	...E200E2N	...E200E2Q	...E200E2X
Diol	...E410E2J	...E410E2N	...E410E2Q	...E410E2X
Si	...E000E2J	...E000E2N	...E000E2Q	...E000E2X

All column dimensions are also available with other KNAUER and NON-KNAUER column materials upon request.