

## Software

### ClarityChrom®

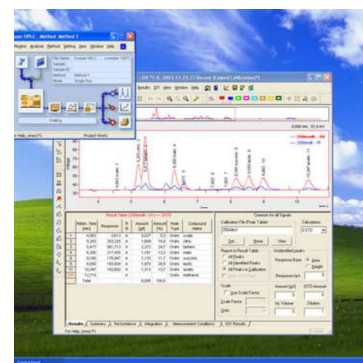
ClarityChrom® is an easy-to-use Chromatography Data System® for workstations. The optional extensions for GC control, PDA and GPC allow to use the software for a wide spectrum of application. Along to all KNAUER devices, devices and systems from more than 45 manufacturers are supported. The ClarityChrom® Prep includes the drivers for several fraction collectors and supports the peak recognition by level and/or slope. The manual fraction control and the option to use the KNAUER electric valves for fractionation gives you more flexibility.

Due to the abundance of supported devices ClarityChrom® allows to update installed systems at a later state and even to operate in system hardware of different manufacturer. The software is in many language version available such as German, Russian, Chinese, French, Spanish, etc.



#### Specifications

Package	ClarityChrom®
System architecture	32-bit CDS
Operating system	Windows 10, Windows 7, Windows 8/8.1, Windows Vista SP2, all 32- and 64-bit; Windows XP SP3 (32-bit only)
Stand-alone	workstation version, max. 4 systems controlled by one computer, max. 3 complete systems recommended
Client/server	no client/server functionality
Multi-user environment	selectable system of user accounts with independently customizable behavior and appearance for individual users
Network environment	easy offline data sharing (at the file level) among all stations in a local network
Fields of application	analytical and preparative HPLC, GPC/SEC, GC, MS
Instrument connection	supports RS-232, Ethernet, PCI interface card, A/D-D/A interface
Recommended PC hardware	Pentium 2 GHz, 2 GB RAM, 4 GB RAM for DAD with high data rate, 20 GB free hard disk space, separate graphics card if one PC should control >1 system
Graphics capabilities	multiple chromatogram view and overlay, PDA view
Integration	27 integration parameters (peak width, threshold, tangent slope ratio etc.) integration parameters programmable in time, automatic re-integration
Calculation types	with/without calibration (int./ext. standard method)
Security and GLP	installation qualification test of the software; FDA 21 CFR Part 11 conformance, validation with virtual detector
Instrument control	method-based instrument control, Instrument status display and direct control mode,
Calibration	6 types of calibration curves, up to 20 levels, reference peaks, groups, unlimited number of standards (peaks), LOD, LOQ
Chromatogram operations	overlay view, custom labels and settings, also applying mathematical operations to chromatograms
Automation	sequences, automatic launch of selected commands or applications immediately following chromatogram acquisition - post run, batch
Presentation of results	Integrated customizable table of results, columns with userdefined calculation, summary table, and export in text or database format
Calculations	custom: 12 predefined mathematical operators, 15 basic and 4 summary functions, special: Kovats indexes for GC, determination of noise/drift, performance calculations
Data import & export	ASCII, AIA, dBase
PDA option	3D chromatogram, peak purity analysis, spectrum search in self-made or commercial spectra library (separate license option)
GPC/SEC option	molecular weight determination in size exclusion chromatography with various calibration methods (separate license option)
System suitability test	automates the calculation of system suitability parameters for system validation (separate license option)



#### Supported devices on page 61.

#### Ordering details:

A1670*	ClarityChrom® single instrument license for one time base
A1674*	ClarityChrom® offline license for data evaluation
A1671*	ClarityChrom® additional instrument license on additional time base
A1676*	ClarityChrom® option for PDA data processing
A1681*	Upgrade for one system from former version to ClarityChrom® or ClarityChrom® Prep
A1685*	ClarityChrom® Prep single instrument license for one time base
A1688*	ClarityChrom® Prep offline license for data evaluation
A1686*	ClarityChrom® Prep additional instrument license on additional time base
A1677*	System suitability option
A1678*	Option for GPC data processing
A1679*	Option for MS data processing
A1690	ClarityChrom® Prep Trial with 30 day Trial license dongle must send back after trial period
A1675*	ClarityChrom® university package one offline license

\* a sequential number is added to the article number which depends on the software version. At the time of printing, the current sequential number is -11 (e.g. A1670-11) for ClarityChrom® Version 7.2.