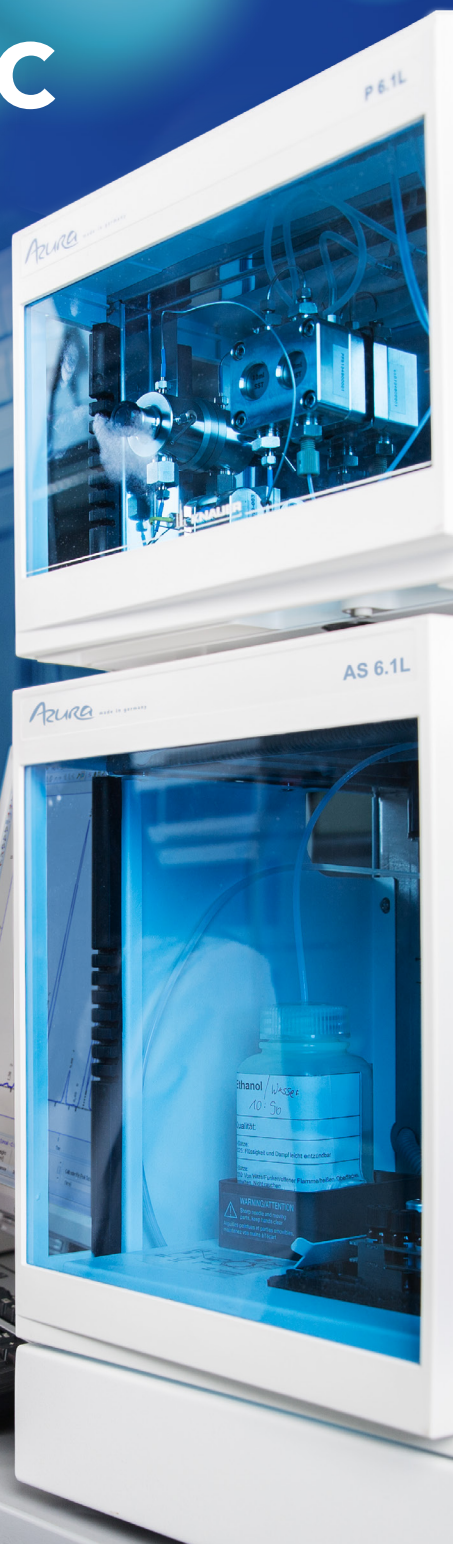


Science Together



AZURA® Analytical HPLC/UHPLC

Stay flexible regarding flow rates and upgrade options



Let your application define your system solution.

In HPLC, components of a mixture are carried through the stationary phase by the flow of a mobile phase and separation is based on differences in

migration rates among the sample components. Therefore, the nature of your analytes defines not only the method but also the HPLC system.

Main characteristics of the analytes:

MOLECULAR WEIGHT defines the pore size of the stationary phase.

SOLUBILITY defines the HPLC mode, chemistry of stationary phase and eluent.

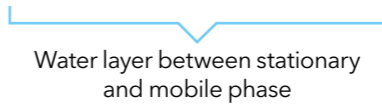
CONCENTRATION AND MATRIX defines the detection parameters and column dimensions.



The solubility of your analytes defines the HPLC mode. The elutropic series defines the solvent strength for the most often used chromatography modes normal phase and reversed phase.



Most common HPLC modes

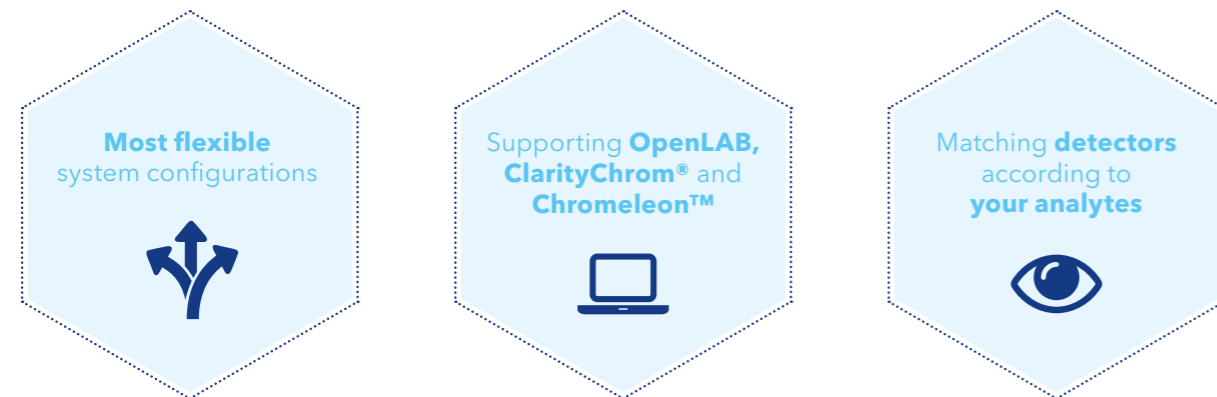
HPLC mode	Mobile phase	Stationary phase	Analytes
Separation of small molecules (up to 2000 Da)			
Reversed Phase RP (<200 Å)	Polar (e.g. mixtures from water and acetonitrile)	Nonpolar (e.g. C18)	Mid-polar - mid-nonpolar soluble in polar and aqueous solvents
Normal Phase NP	Nonpolar (e.g. heptan)	Polar (e.g. SiOH)	Nonpolar soluble in nonpolar solvents, insoluble in water
Hydrophilic Interaction Liquid Chromatography HILIC	Polar organic solvents + water	Polar (e.g. SiOH)	hydrophilic and highly polar not retained by RP
 <p>Water layer between stationary and mobile phase</p>			
Separation of biomolecules (larger than 2000 Da)			
Wide Pore Reversed phase RP (>200 Å)	Polar	Nonpolar	Mid-polar - mid-nonpolar soluble in polar and aqueous solvents
Polymer gel based stationary phases			
Ion Exclusion & Ligand exchange	Water, acidic water	Organic resin with charged groups	Sugars, organic acids, alcohols

AZURA® Analytical HPLC/UHPLC

Efficient and adaptable to your needs

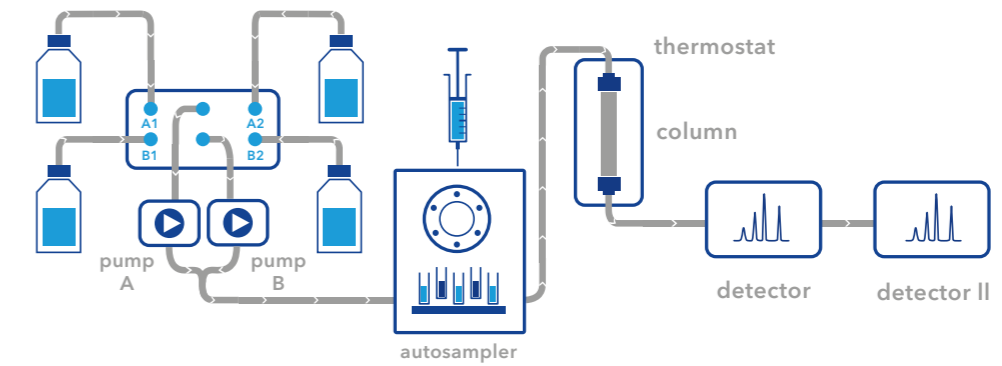
The analytical HPLC and UHPLC systems of the KNAUER AZURA liquid chromatography instruments are designed to support and facilitate your work. Whether doing routine analysis or demanding separation tasks, AZURA systems are the right

tool to overcome your analytical challenges. Choose between different gradient forming technologies and maximum flow rates to find the best configuration for your task.



Features

- Isocratic binary high pressure gradient (HPG) or quaternary low pressure gradient (LPG) pump
- Pump heads allowing flow rates up to 10 ml/min at 700 bar or 1 000 bar up to 2 ml/min
- Autosampler with 0.1 µl sample aspiration at max. 1 240 bar with zero sample loss
- Choice of highly sensitive UVD, MWD, DAD, or RID detectors with intelligent temperature control
- Wide range of flow cells available, including remote cells
- Finger-tight high pressure stainless steel capillary connections "K-Connect"
- Extensive safety features such as leak management and sensors
- Frontal access of detector lamp and pump head for easy maintenance



Eluent delivery
A choice of pumps available in different flow rates and pressure ratings
(see page 6)

Injection modules
Automatic or manual injection
(see page 8)

Detection
Various detector types (UV/VIS, DAD, RI) and flow cells
(see page 15)

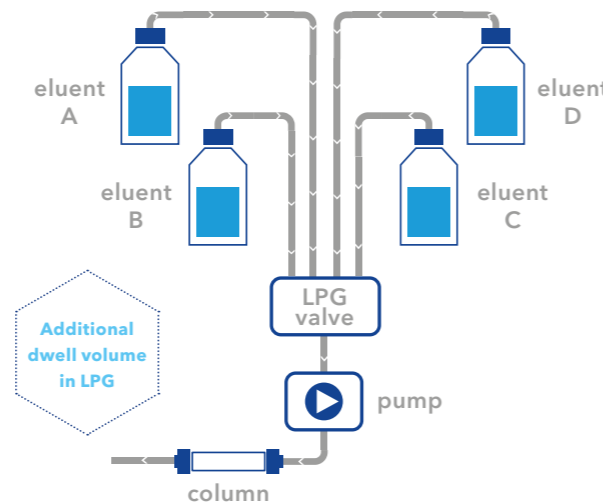
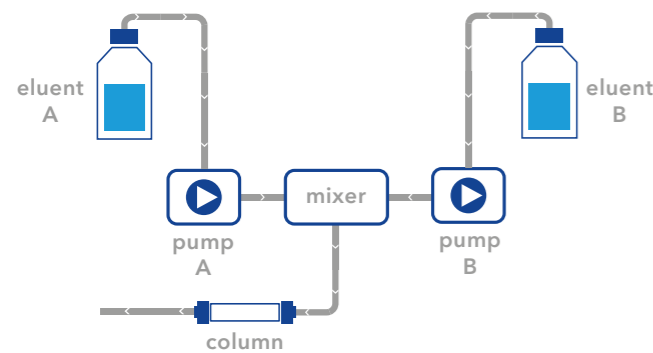
Tempering
Column thermostats and column switching solutions
(see page 10)



Gradient HPLC

Advantages and disadvantages of HPG and LPG

HPG (Binary HPG pump)	LPG (Quaternary LPG pump)
Small gradient delay volume	Higher gradient delay volume
Fast methods	For classical HPLC methods: no difference For UHPLC: slower gradients
Only binary gradients possible	Ternary and quaternary gradients possible
2 pumps that have to be maintained	Only 1 pump, but shorter maintenance intervals because of higher usage



The dwell volume

The dwell volume is responsible for the time delay for a gradient. By definition it is the volume of a gradient HPLC system between the mixing chamber and the column inlet. It is typically higher in LPG systems caused by the setup of the pump. Therewith, gradients are faster with HPG systems.



Whether an LPG or an HPG pump is recommended highly depends on the user's preferences.

Only if very fast UHPLC gradients are needed, an HPG will be recommended.

If a quaternary gradient is inevitable, an LPG pump has to be applied.

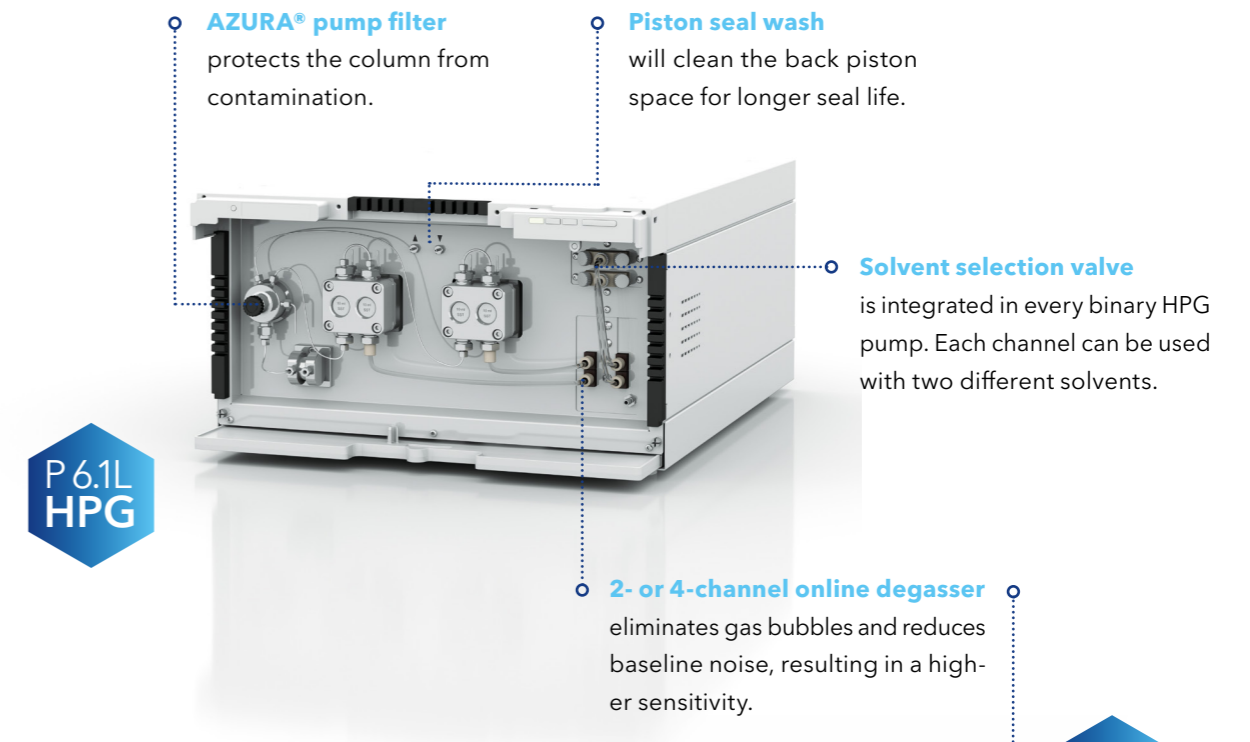
In any other case: The user decides!

AZURA® Pump P 6.1L

Choose your HPLC pump according to your application's needs. Gradient formation, mixer size and pulsation compensation will have an extensive influence.

Choose between pump heads with a maximum flow rate of 10 ml/min and 700 bar back pressure,

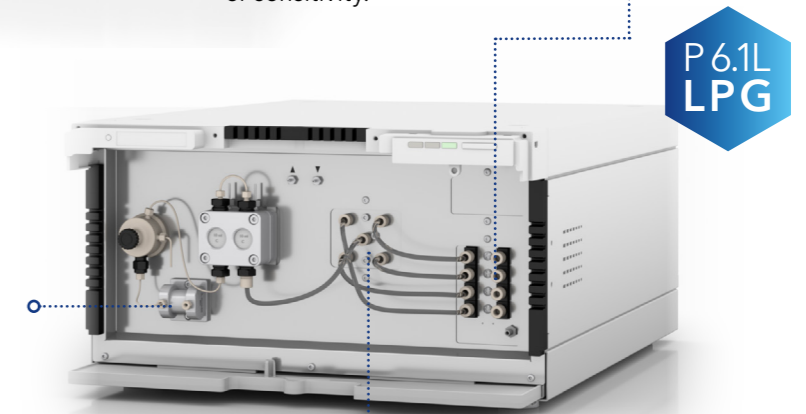
or pump heads with a flow rate of 5 ml/min and 1000 bar backpressure. Special pump heads for normal phase applications will help to deliver robustly even demanding eluents like heptane or hexane. Pumps without a degasser offer a cost effective alternative.



P 6.1L
HPG

AZURA® mixer

Highly efficient microfluidic solvent mixer combines high mixing performance with a low dead volume. The user-changeable mixer is available in different volumes (50/100/200 µl) allowing best possible adaption to any application.

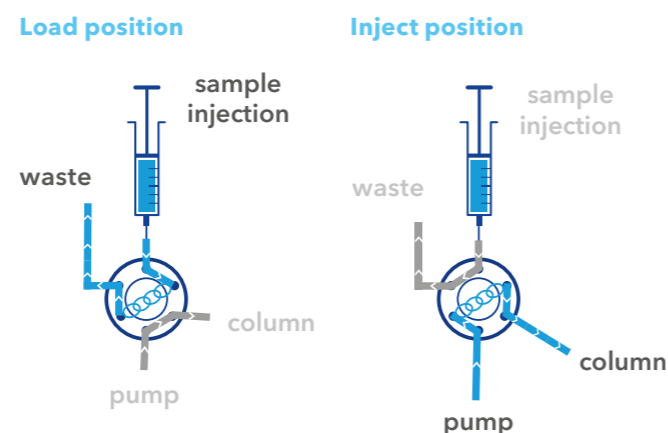


P 6.1L
LPG

Sample injection

Principle of manual injection

Manual injection valves are the most cost-effective option to introduce samples. Normally, valves with 6 ports and 2 positions - for loading and injection - are used. In the load position a sample loop is filled with sample while the system is equilibrating. When turning to the inject position, the sample loop is switched to the high pressure part of the HPLC system. The flow delivered by the pump flows through the loop and feeds the sample onto the column.



KNAUER valves feature a wide back pressure range of up to 1200 bar with a 0.3 mm bore size. All valves can be equipped with an automatic valve drive. In addition, an integration into the assistant module housing AZURA ASM 2.1L is possible. For automated injection of up to 108 different samples, we recommend to use an autosampler. The KNAUER AS 6.1L also works with an injection valve and a sample loop, but features several injection modes as described below.

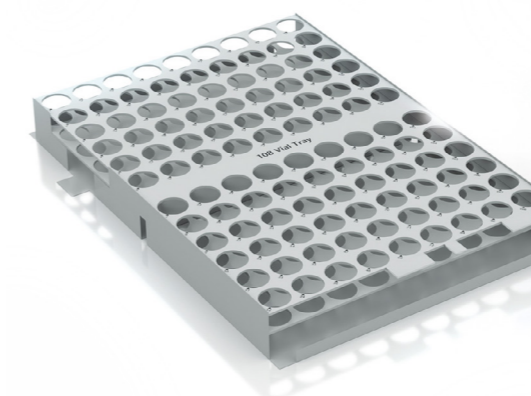
Injection modes of the autosampler AS 6.1L

Device	Key features
Full loop	<ul style="list-style-type: none"> • Sample loop is completely filled with the sample. • Maximum reproducibility but not the maximum accuracy is achieved because the size of the sample loop may have a deviation. • Maximum injection volume equals the loop volume. • Sample loss caused by the need of overfilling of the loop.
Partial loop	<ul style="list-style-type: none"> • Sample loop is filled with both sample and mobile solvent. • High precision of the sample volume with minimal loss of sample • Maximum injection volume equals 50 % of the loop volume • Sample loss per injection equals the adjusted flush volume plus three times the sample volume for the syringe used.
Microliter pick-up	<ul style="list-style-type: none"> • Sample loop is filled with a very small amount of sample and transport liquid or wash solution (mobile phase). • Very high precision • No loss of sample

Autosampler AS 6.1L for automated injection

The AZURA Autosampler AS 6.1L is a high precision device available for a maximum back pressure of 1240 bar. This autosampler can inject from up to 768 positions when equipped with microtiter plates or from up to 108 standard 2 ml sample vials. This device is equipped with an ILD™ valve, consisting of a rotor-stator combination with a central port for depressurizing the sample loop before receiving the sample. This way, the sample is not deluted with solvent. The AS 6.1L is available with a pressure rating of 1240 bar, a more cost effective version with a pressure rating of 700 bar and as a preparative or biocompatible version.

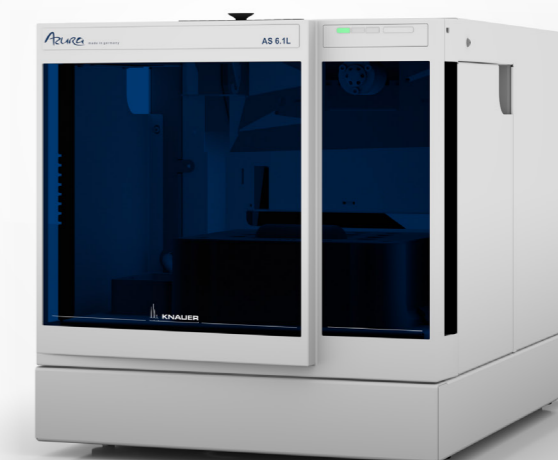
- Up to 1240 bar (700 bar)
- Cooling/heating option (4 - 40 °C)
- 0.1 µl - 10 000 µl (depending on configuration) sample injection volume
- Up to 768 samples (microtiter plates) or 108 standard vials
- Intermediate Loop Decompression - ILD™



Rack for 108 standard 2 ml vials



Most important factors in injection are precision, accuracy and carry-over. They are effected by the injection technique and equipment and for manual injection also by the user.



The Integrated Intermediate Loop decompression valve reduces sample dilution and increases measurement reproducibility.

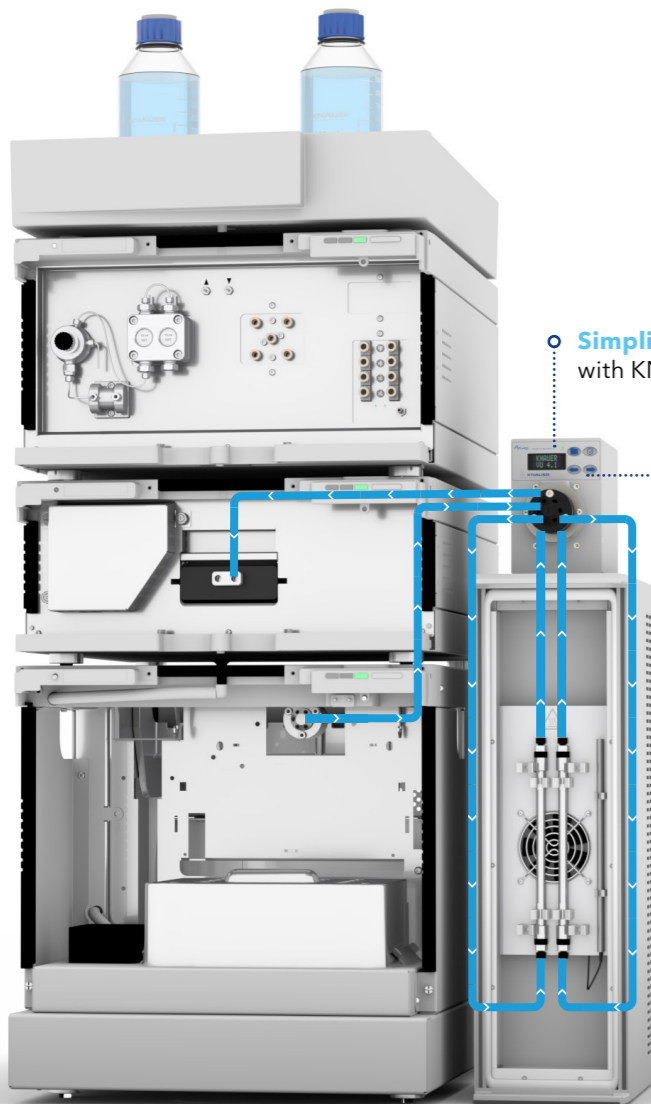
Column tempering and switching

Column Thermostat CT 2.1

The AZURA CT 2.1 is a forced air column thermostat capable of heating or cooling from 5 to 85 °C. The powerful fan and robust peltier element keep the column at a very stable temperature, thus allowing reproducible analysis results.

Be flexible with KNAUER valves

KNAUER valves are designed for a wide range of chromatographic applications. Flexibility is provided by choice of different materials and sizes as well as drivers for various software packages.



○ **Simplified column switching** with KNAUER valves

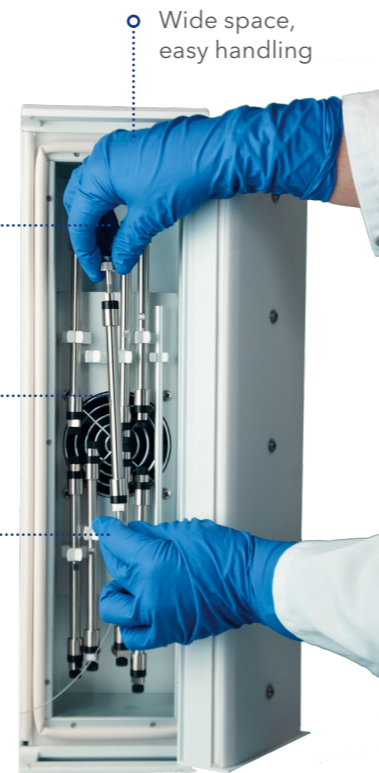
○ Valves are driven either manually or automatically through a valve drive.

○ Wide space, easy handling

○ Up to 6 columns with maximum 300 mm length

○ Columns up to 16 mm ID

○ Cooling and heating from 5 - 85 °C



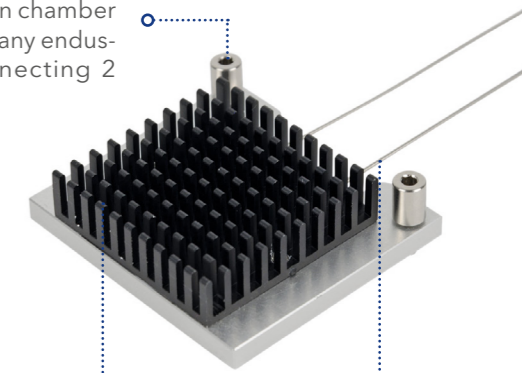
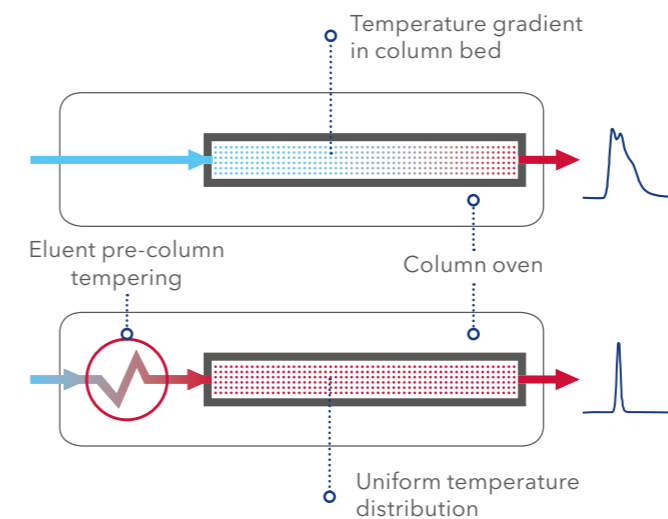
Column thermostats are an essential part of each HPLC system since most HPLC separation parameters are temperature-sensitive. Hence, the control of the column temperature is one of the most important prerequisites for reproducible results in HPLC.

Eluent pre-column tempering

When running HPLC at temperatures above 40 °C, a significant temperature gradient within the column is always present when mobile phase pre-heating is not applied in air-conditioned laboratories.

This device will converge solvent temperature with column temperature before entering the column and will therefore reduce temperature gradients within the column.

The Eluent pre-heating cartridge can easily be retro-fitted to the oven chamber of the CT 2.1 by any end-user by just connecting 2 screws.



Eluent pre-heating cartridge for CT 2.1

Available with 0.10 or 0.18 mm inner diameter (5 µl/18 µl inner volume)

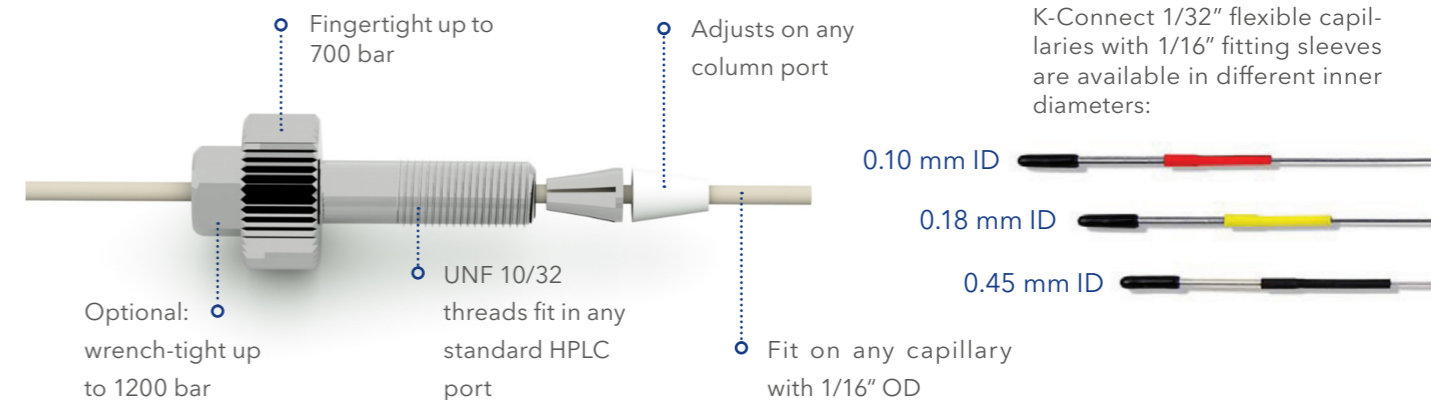


Rule of thumb

For flow rates higher than 500 µl/min or temperatures above 50°C, the use of a pre-heating cartridge is recommended.

K-Connect fittings and capillaries

Flexible capillaries and fingertight connections provide easy handling while ensuring high pressure stability. Precision manufactured surfaces and edges significantly enhance fluid transfer.



Columns for HPLC and UHPLC



STAY FLEXIBLE

Any commercially available standard HPLC column can be used in an AZURA analytical system. KNAUER HPLC columns are compatible with any LC system.



BE SAFE

Find the matching guard column solution for your analytical column and extend its lifetime even if more aggressive eluents or samples are used.

FIND YOUR PERFECT MATCH

We offer a wide range of stationary phases for nearly every application field.



MAKE IT SIMPLE

Easiest up- and downscaling with the same selectivity in many different particle- and column dimensions as well as pressure ranges.



Which column dimensions are recommend?

While the stationary phase always depends on the application, the recommended column dimensions are mainly dependent on the pump integrated in your AZURA analytical system:

Analysis	AZURA pump	Typical column dimensions
Classical HPLC	P 6.1L 700 bar	250 x 4 mm ID / 250 x 4.6 mm ID, 5 µm
HPLC Plus	P 6.1L 700 bar	150 x 3 mm ID, 3 µm
UHPLC	P 6.1L 1000 bar	100 x 2 mm ID, 2 µm



Smaller column dimensions

=

Shorter analysis time

=

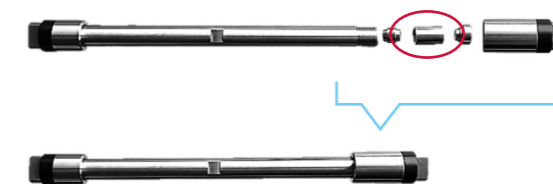
Higher back pressure and performance

Safety solutions for every column

Inner diameter of the analytical column	Recommended safety solution	Advantages
2 mm	UHPLC precolumn filter	Minimized dead volume via sintermetal filter instead of a packed precolumn cartridge, easy exchange.
3 - 4.6 mm, KNAUER Vertex Plus column hardware	Integrated precolumn	Low dead volume because no capillary is used between analytical column and precolumn. Can easily be installed later on any KNAUER Vertex Plus column without a precolumn.
3 - 4.6 mm, any column hardware	External precolumn cartridge and holder	Precolumn can easily be flushed in reversed flow for cleaning.
8 mm	External precolumn	High capacity for analytical and semi-preparative purposes, easy cleaning by flushing in reversed flow.

A guard column system is always recommended to protect the valuable analytical column, but especially when:

- Aggressive eluents are used.
- Injected samples are dirty.
- Not only standards but different samples are analyzed.



An integrated precolumn can be exchanged very easily by the user.

HPLC/UHPLC of small molecules: Silica based phases: Eurospher II

Modification	USP code
C18 P	L1
C18 H	L1
C18	L1
C18 A	L1
Phenyl	L11
C8	L7
C8 A	L7
C4	L26
NH ₂	L8
CN	L10
HILIC	-
Diol	L20
Si	L3

Nonpolar phases:
RP

Polar phases:
NP & HILIC

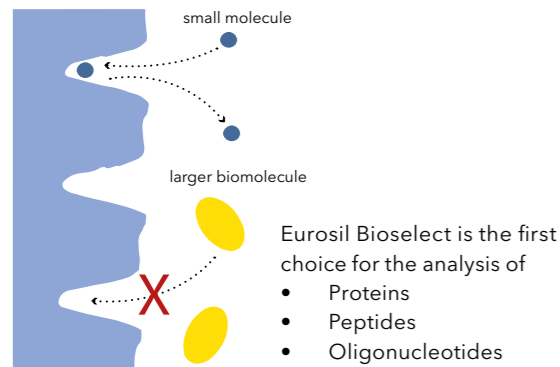
Highest flexibility

13 different modifications are available for a wide range of small molecule applications (< 2000 Da)

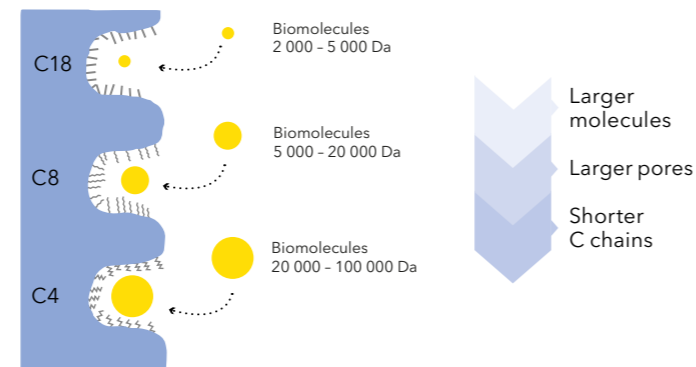
- Reversed phase mode for samples, soluble in water and water/organic solvent mixes
- Normal phase mode for water insoluble samples
- HILIC mode for highly polar and water soluble samples that are not retained by RP chromatography
- Ion pair chromatography for acids and bases that are poorly retained in RP mode

KNAUER columns for the determination of biomolecules: Eurosil Bioselect

Why do I need wide pores?



Which modification should I choose?



HPLC of sugars, organic acids and alcohols: Eurokat

A complex separation consisting of ligand exchange, ion exclusion, ion exchange, size exclusion and partition mechanisms. Based on a sul-

fonated cross-linked styrene-divinylbenzene copolymer, 4 ionic forms are available for special applications:

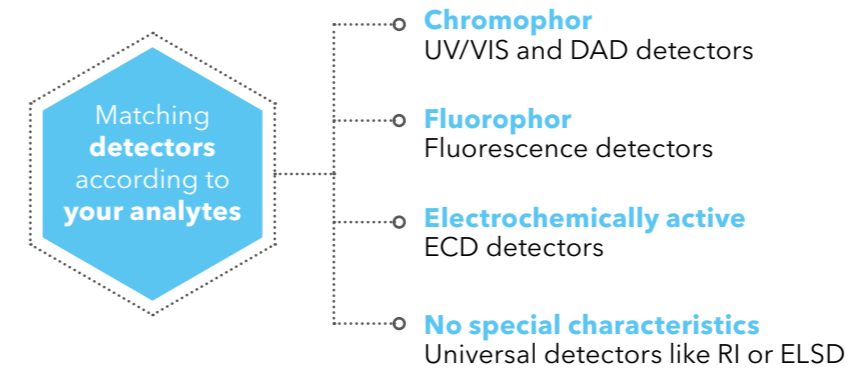
H	Sugars, organic acids and alcohols
PB, Ca	Small carbohydrates (mono- and disaccharides)
Na	Sugar oligomers (up to DP 8)

Eurokat is ideal for the **organic solvent free** analysis of:

- Fruit beverages
- Soft drinks
- Wine
- Beer
- Fermentation broths

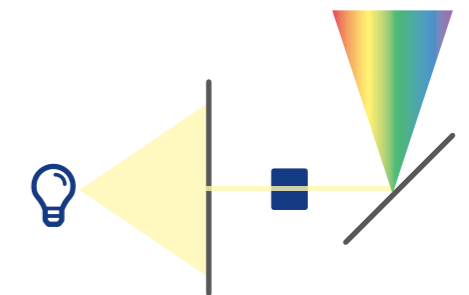
Detection

When do I use which detector? The detection technique depends on the characteristics of the analyte.



Variable or multiple wavelength detectors (MWD or VWD)

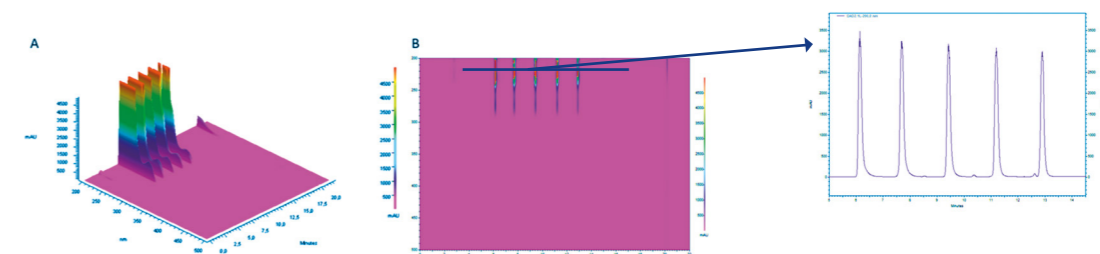
Classical UV detectors record 2D data as a chromatogram. These devices are called VWD or MWD. Nevertheless, 3D-like measurements can be done by scanning the wavelength range. VWD or MWD detectors cannot record 3D data over the whole analysis time but just in programmed time frames.



3D data means that full UV spectra are measured and these spectra are plotted over the whole time. This is useful for unknown analytes or target compounds with different UV characteristics. Additionally 2D chromatograms can be extracted from 3D-data at any wavelength.

Diode array detectors (DAD or PDA)

Devices called DAD or PDA detectors are able to record 3D data in addition to the 2D data over the whole analysis time.



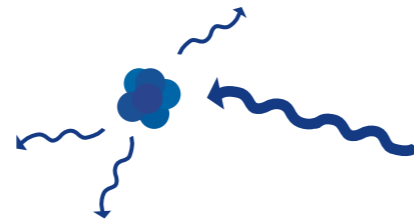
Special detection

Highly sensitive and specialized detectors

Fluorescence detection

These detectors allow to develop highly selective methods with sensitivities three to six orders of magnitude greater than UV detection.

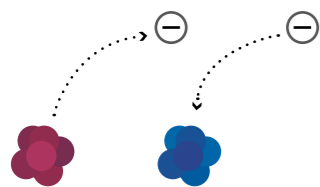
- + Very sensitive method
- + Easy handling
- Only for fluorescent molecules



Electrochemical detection

Very sensitive, selective detection of oxidizable/reducible compounds. In amperometric electrochemical detection the electrical current is measured resulting from oxidation or reduction reactions.

- + Very sensitive method
- + Lowest LODs
- Only for special applications
- Handling is not for beginners

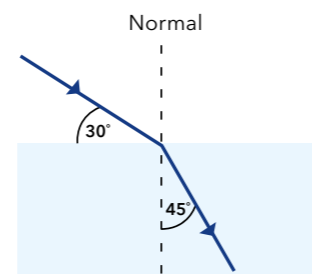


Universal detection

Refractive index detection (RI)

RI detection is a cost-effective solution for the analysis of sugars, polymers, surfactants and other compounds that do not contain a chromophore. These detectors measure the ability of analyte molecules to bend or refract light.

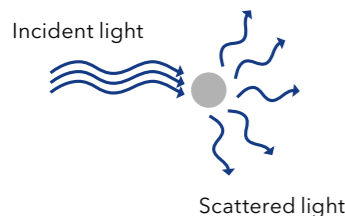
- + UV absorbing solvents usable
- + Very price attractive
- + Easy to use
- No gradient elution
- Comparably low sensitivity



Evaporative light scattering detection (ELSD)

As an universal detector, an ELSD offers numerous possibilities for detecting substances that have few or no chromophores. Since the eluents are evaporated, the use of non-UV-compatible solvents poses no problems and the ELSD is gradient compatible.

- + Gradient elution possible
- + Comparably high sensitivity
- Comparably cost-intensive
- Very clean solvents needed
- Nitrogen source needed
- Not suitable for volatile compounds



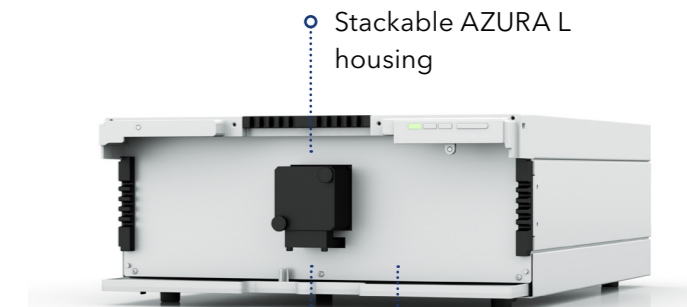
Sensitive UV/VIS detectors

Choose between single variable wavelength, multiple variable wavelength and 3D diode array detectors.

Single variable wavelength detectors

AZURA® UVD 2.1L

Target analytes: Molecules carrying a chromophore, all analytes in a sample that absorb at the same wavelength



Data rate up to 50 Hz



Modern detectors can record data rates up to 100 Hz or even more. These high data rates are needed in very fast UHPLC. For classical HPLC, 20 or 50 Hz are typically sufficient.

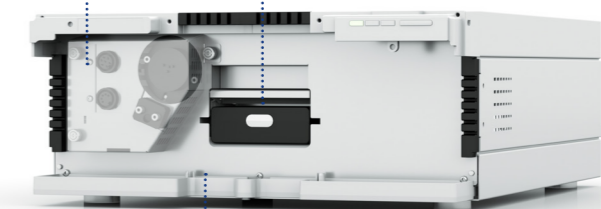
Multiple variable wavelength detectors and diode array detectors

AZURA® MWD 2.1L, DAD 2.1L and DAD 6.1L

Target analytes: Molecules carrying a chromophore, adsorption at different wavelengths or for method development

Wavelength range:
MWD 2.1L & DAD 2.1L: 190 - 700 nm
DAD 6.1L: 190 - 1 000 nm

Data rate up to 100 Hz

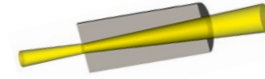


LightGuide flow cells and Polka-Dot technology

Flow cell cartridges for MWD and DAD detectors

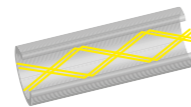
PressureProof Flow cells

- Price attractive and robust
- Possibility to couple a second detector or LC dimension caused by the pressure stability up to 300 bar
- Also suited for higher flow rates up to 20 ml/min

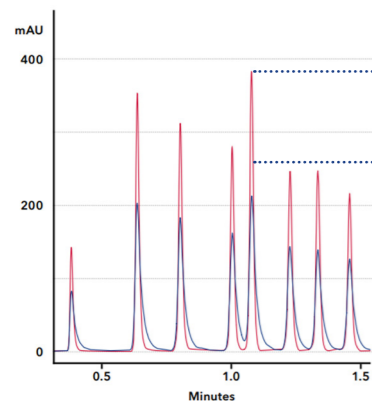


LightGuide Flow cells

- Total reflection technology for high sensitivity
- Minimized cell volume for high resolution



Comparison of flow cells with 10 mm path length: PressureProof vs. LightGuide

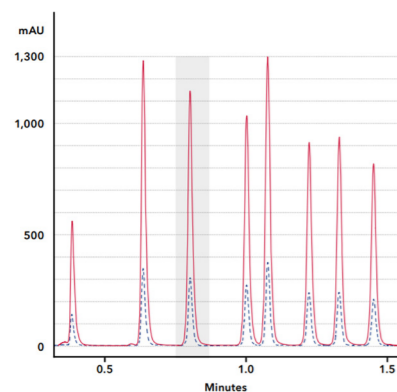


- Higher peaks with lightguide caused by total reflection technology
- Sharper peaks with lightguide caused by lower cell volume

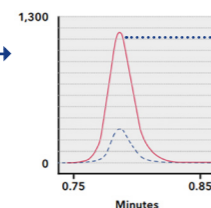
Blue: Analytical PressureProof
Red: Standard LightGuide

The great advantage of LightGuide flow cells and their low dispersion volume seen in UHPLC does not play a major role in classical HPLC as the complete system dispersion volume is much larger.

Comparison of LightGuide flow cells: Standard vs. High Sensitivity



Blue: Standard LightGuide with 10 mm path length
Red: High Sensitivity LightGuide with 50 mm path length



Peaks get around 4 times higher with Lightguide High Sensitivity flow cell

Which flow cell fits your application best?

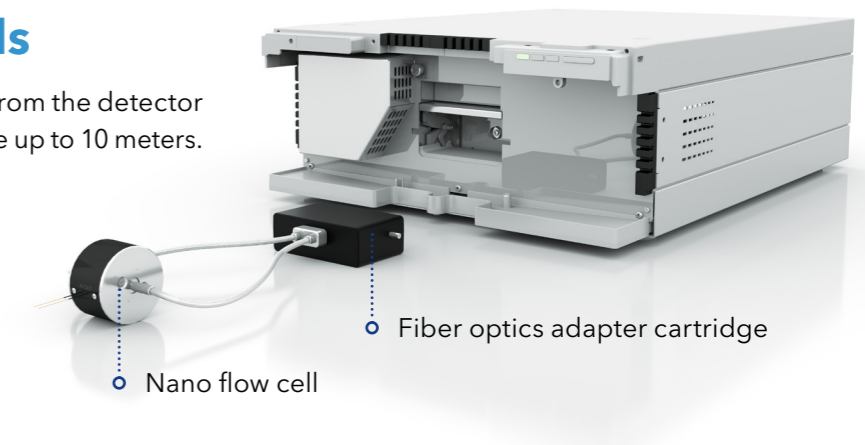
Analysis	Typical HPLC column dimension	Main objective	Recommended flow cell
Classical HPLC	250 x 4 mm ID / 250 x 4.6 mm ID, 5 µm	Robust method	Analytical PressureProof
		High sensitivity	High sensitivity LightGuide
HPLC Plus	150 x 3 mm ID, 3 µm	Robust method	Analytical PressureProof
		High resolution and fast runs	Standard LightGuide
UHPLC	100 x 2 mm ID, 2 µm	High resolution and fast runs	Standard Lightguide
		High sensitivity	High sensitivity LightGuide
Micro and Nano LC	100 x 0.3 mm ID, 5 µm 50 x 0.075 mm ID, 3 µm	Lowest volume	Nano flow cell with fiber optics



KNAUER flow cells in cartridge design are very easy exchangeable by just clicking them out without any tools.

Remote flow cells

Separate the flow cell spatially from the detector via fiber optic cables in a distance up to 10 meters.

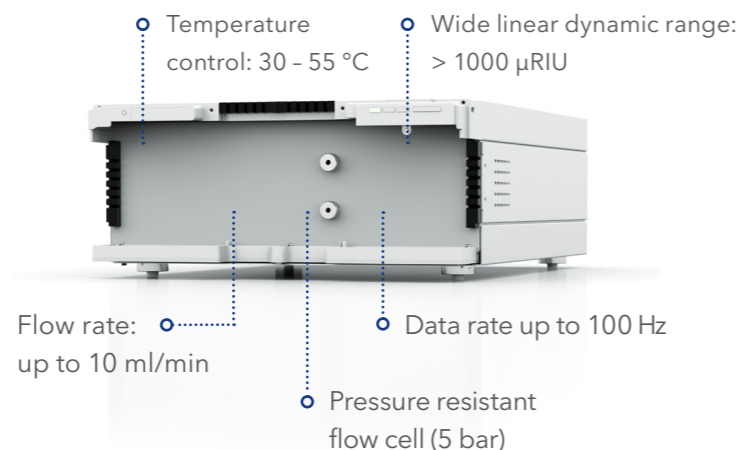


Universal detectors

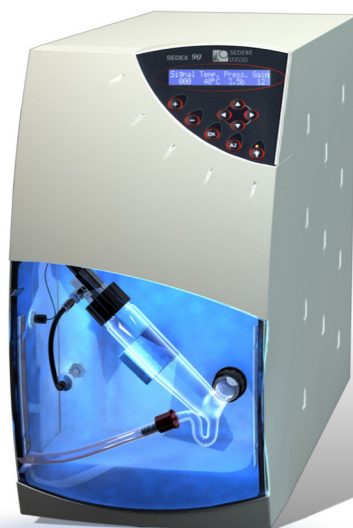
AZURA® RID 2.1L

The AZURA RID 2.1L is a highly competitive and sensitive refractive index detector, ideal for fast and reliable routine analysis of non-UV absorbing substances. The intelligent temperature control guarantees fast baseline stabilization and stable operation.

Target analytes: alcohols, sugars, saccharides, fatty acids and polymers



Light Scattering Detector Sedex 85LT, Sedex 90LT and Sedex 100LT
Sensitive universal detection with the possibility to run gradients



As an universal detector, an ELSD offers numerous possibilities for detecting substances that have few or no chromophores. Since the eluents are evaporated, the use of non-UV-compatible solvents poses no problems and the ELSD is gradient compatible.

Target analytes: Carbohydrates and similar compounds, detergents, ionic and non-ionics, artificial sweeteners, antioxidants, amino acids, lipids, peptides, polymers, pesticides, proteins, steroids



ELSD is a good replacement for a Charged Aerosol Detector (CAD). Just choose the right fitting nebulizer and get the best out of the ELSD for your analyte detection.

Special detectors

One of the smallest single variable wavelength detectors on the market

AZURA® UVD 2.1S

The AZURA UVD 2.1S offers excellent technical specifications for routine laboratory work. With its small footprint, it is one of the smallest detectors for HPLC on the market.

Highly competitive UV detector
Wavelength range: 190 - 500 nm



Fluorescence Detector RF-20A

The fluorescence detector RF-20A provides world-class sensitivity, excellent maintainability and diverse validation / support functions. It supports a wide range of applications in the wavelength range of 200 to 650 nm from conventional analysis to high-performance analysis.

Target analytes: Fluorescent molecules like polycyclic aromatic hydrocarbon, fluorescence tagged analytes like amino acids or proteins

Electrochemical Detector DECADE Elite SCC

With its measurement frequency up to 100 Hz, this electrochemical detector is specially designed for super-fast highly sensitive and selective measurement of oxidizable and reducible substances in (U)HPLC. The DECADE Elite comprises of a thermostat-controlled Faraday's cage, accommodating column and flow cell.

Target analytes: Vitamins, neurotransmitters, carbohydrates, antioxidants, antibiotics, phenols and polyphenols, bisphenol A, pesticides



Interface Box IFU 2.1 LAN

The KNAUER interface box IFU 2.1 LAN allows highly precise analog data acquisition of third party modules over analog and relay outputs. Example: MALS-detectors for molecular weight determination.

Software

Mobile Control

KNAUER's monitoring and control software for AZURA® devices and systems

With the hand-held Mobile Control (Chrom) option you have your AZURA devices at your fingertips. Remotely control and monitor your system and enjoy the touchscreen-optimized user interface. Choose Mobile Control as an easy-to-use and cost-effective software solution!

Mobile Control

Mobile Control provides full access to AZURA devices. Change device settings, set operating parameters, automate device control or check the system status... Mobile Control features all functionalities of a display. Do you want more than a display without using an advanced chromatographic data system?

Mobile Control Chrom

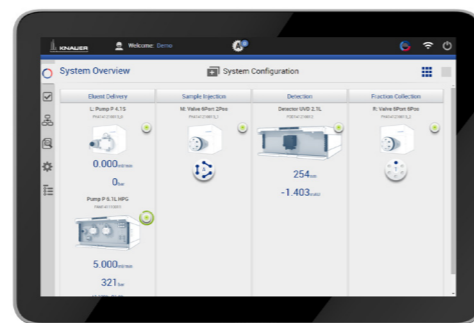
Mobile Control Chrom features data acquisition from AZURA detectors in addition to full device control.

OpenLAB® CDS EZChrom Edition

OpenLAB CDS EZChrom Edition is the next generation of chromatography data systems. It provides chromatography data acquisition, processing and control of GC and LC chromatographs and is used in chromatography operations ranging from single user/single instrument to multi-user/multi-instrument laboratories.

ClarityChrom® CDS

ClarityChrom is an easy-to-use chromatography data system for workstations. The optional GC- and Knauer FRC control modules and extensions for PDA, SST, SEC/GPC and MS allow using the software for a wide range of applications.








Chromeleon™ 7.2 Drivers

Thermo Scientific™ Dionex™ Chromeleon™ is one of the most wide-spread chromatography data systems. Its intuitive handling benefits laboratory workflow and the highly developed algorithms simplify data processing. It offers a broad range of third-party drivers and can be easily used with existing HPLC systems. KNAUER offers drivers for a lot of its devices.



AZURA® Analytical HPLC systems

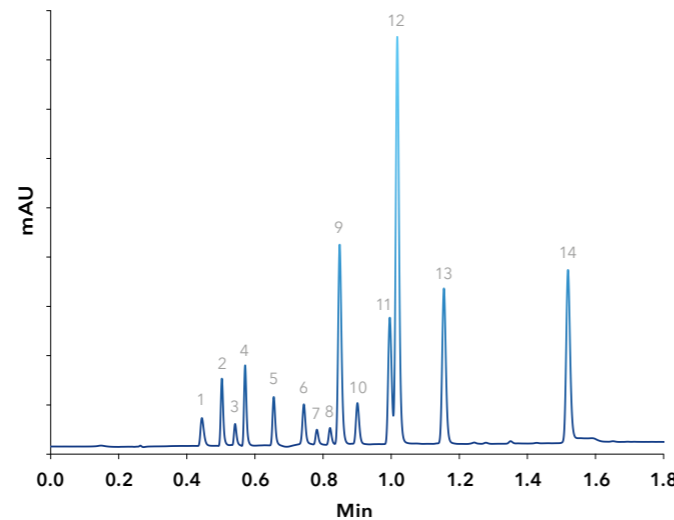
Product	Features	Page
AZURA Analytical UHPLC system 	This system features a AZURA P 6.1L HPG pump, an autosampler 6.1L, a column thermostat CT 2.1, a DAD 6.1L UV/VIS detector with 8-variable UV measuring channels from 190 - 1000 nm, as well as a Tablet PC with AZURA Mobile Control. It is the UHPLC system with a backpressure range of 1000 bar. It perfectly fits the demanding needs of a method development system, as well as the robust fitness of a routine analysis machine.	24
AZURA Educational system 	Complete isocratic analytical HPLC system, UV/VIS detector with one variable wavelength, pump unit with pressure sensor for a low pulsation eluent supply, optional AZURA Mobile Control app allows direct control of all integrated modules.	25
AZURA Analytical system for analysis of carbonyl emissions in air 	HPLC up to 700 bar in LPG version for quaternary gradients, 10 mL pump head, 8-channel DAD detector with 3D UV/Vis detection at 190-700 nm and up to 100 Hz, column thermostat, automated injection via autosampler, Mobile Control for monitoring and control of the integrated modules, ClarityChrom CDS for instrument control, data acquisition and data processing.	26
AZURA GPC Cleanup system 	The system features 15 sample loops controlled by two 16 port multiposition valves. With an additional multiposition valve 15 fractions and waste can be collected. All multiposition valves and the manual injection valve are integrated into a compact AZURA® Assistant ASM 2.1L. Elution of separated substances/standard components is monitored by a variable single wavelength UV detector. A second assistant harbors the small detector, the system pump with a pressure sensor and a valve to bypass the GPC column or select between two columns, Mobile Control for system control.	27
AZURA sugar system 	HPLC up to 700 bar in isocratic version, 10 mL pump head, refractive index detector, column thermostat, manual injection via an injection valve, Mobile Control for monitoring and control of the integrated modules, ClarityChrom CDS for instrument control, data acquisition and data processing.	28

Polyphenol analysis in chocolate

Determination of 14 compounds in 1.5 minutes using the AZURA® UHPLC system

UHPLC for quality control of dark chocolate

- Polyphenols and alkaloids like caffeine or theobromine



1 Acesulfam K; 2 Theobromine; 3 Saccharin; 4 Theophylline;
5 Caffeine; 6 Chlorogenic acid; 7 Catechin; 8 Epicatechin;
9 4-Hydroxybenzoic acid; 10 Vanillin; 11 Guaiacol; 12 Sorbic acid;
13 Methylparaben; 14 Propylparaben

UHPLC system

Analytical HPG configuration with DAD detection



Devices	Key features
AZURA Pump P 6.1L	HPG pump, 0.001-5 ml/min, sst, max. 1000 bar
AZURA Detector DAD 2.1L	Diode array detector, D ² lamp, 190-700 nm, max. 100 Hz
AZURA Column Thermostat CT 2.1	Forced air column thermostat, 5 - 85 °C
AZURA Auto-sampler AS 6.1L	Analytical autosampler, 0.1 µl - 10 ml injection volume, cool/heat option, 108 vial positions, max. 1240 bar

How do you explain HPLC? AZURA® Educational system

For tomorrow's HPLC professionals

Your AZURA Educational System includes printed training material that explains several applications of HPLC. For example, the quantitative determination of caffeine and paracetamol in samples of your choice (e.g. coffee, soft drinks, medicine) is explained in detail.



In simple steps, students are introduced to basic concepts and terms used in HPLC such as calibration curve and internal standard. The easy to understand instructions guide them through the complete experiment, including setup, run and analysis.

What is included?

Devices	Key features
HPLC system AZURA Educational System	AZURA Compact HPLC with pump P 4.1S and detector UVD 2.1S with flow cell (10 mm path length, 1/16" connectors)
Sample application	Manual injection valve including 10 µl sample loop HPLC injection syringe (straight needle), 100 µl volume injection valve mounting bracket
Start-up kit AZURA	Capillaries and fittings (PEEK, 1/16")
Accessories	Eluent tray E 2.1L set of mobile phase bottles (2 x 1000 ml) tool kit for HPLC system setup
PC	Laptop with pre-installed Windows
PC communication	Router for LAN connection (8 x)
Software for controlling and recording	ClarityChrom software and licence for the AZURA Compact HPLC system
HPLC Column	With Eurospher II 100-5 C18 with integrated precolumn, 125 mm x 4 mm ID, magnetic clip to attach column

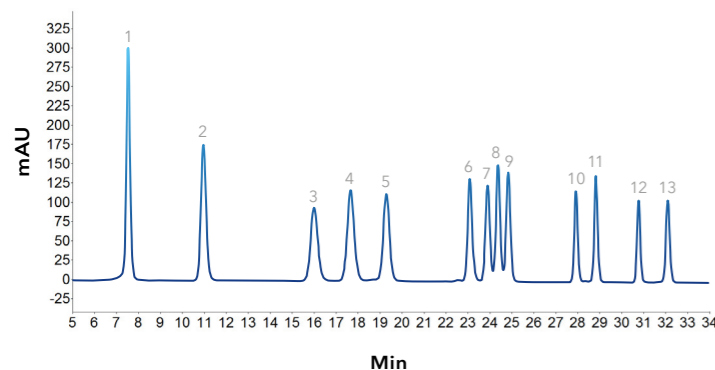
Analysis of carbonyl emissions in air

In the monitoring of industrial air, the determination of carbonyl (aldehyde and ketone) emissions is crucial to prevent respiratory, pulmonological, autoimmune diseases or cancer.

HPLC solution by KNAUER

According to the analytical method described in DIN ISO 16000-3, the carbonyls must be converted to their corresponding hydrazones with 2,4-dinitrophenylhydrazine (DNPH) in order to be detected via UV detector and analyzed by reversed phase HPLC.

For method optimization DryLab® has been used and the detailed application note (VEV0078) is available on the KNAUER website: "Systematic HPLC method development and robustness evaluation of 13 carbonyl DNPH derivatives using DryLab®".



1 Formaldehyde-DNPH; 2 Acetaldehyde-DNPH; 3 Acetone-DNPH; 4 Acroleine-DNPH; 5 Propionaldehyde-DNPH; 6 Crotonaldehyde-DNPH; 7 2-Butanone-DNPH; 8 Methacroleine-DNPH; 9 n-Butaldehyde-DNPH; 10 Benzaldehyde-DNPH; 11 Valeraldehyde-DNPH; 12 m-Tolualdehyde-DNPH; 13 m-Tolualdehyde-DNPH

System (A46001)

HPLC Plus System with 8-channel DAD detector, LPG pump (700 bar), autosampler and column thermostat, DNPH-column

Optional hardware and software

Chromatography workstation for OpenLab/Chromeleon, Mini PC, WIN 7, 64 bit, 24" Monitor


Chromatography workstation for ClarityChrom®, Mini PC, WIN 10, 64 bit, 24" Monitor

ClarityChrom® single instrument license one time base

OpenLAB® CDS EZChrom edition workstation for one system with SMA and 4x system suitability

Chromeleon™ 7.2 driver

Optional service: Installation

 This gradient HPLC system perfectly meets even sophisticated analysis demands.




Sample preparation for the analysis of pesticides

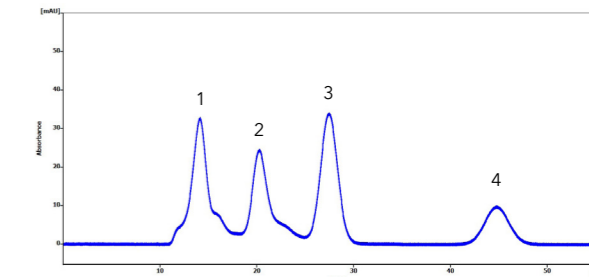
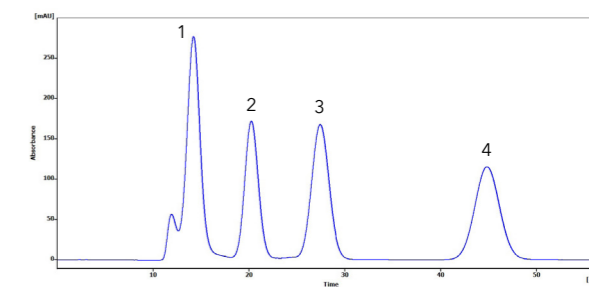
Preparative system for general cleanup tasks relying on gel permeation

GPC Cleanup system by KNAUER

- Saves time with automated sample preparation
- Improves the reproducibility and quality of your analytes
- Fully automatically processes up to 15 samples while requiring minimal bench space
- Can be customized to fulfill individual requirements



 The AZURA GPC cleanup system was selected by the Analytical Scientist for „The Innovators 2017“ product.



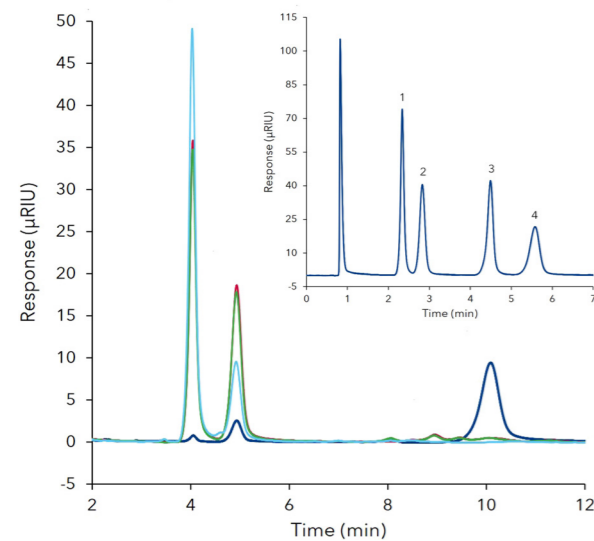
Four pesticide standards with US EPA method 3640A (A) and a chromatogram of spiked olive oil (B).

Devices	Key features
AZURA Assistant ASM 2.1L	UVD 2.1S 6 port 2 pos valve, 1/16", sst, 300 bar P 4.1S, 10 ml, sst, 50 bar
AZURA Assistant ASM 2.1L	3 valves: 16 port 16 pos, 1/16", sst, 50 bar
AZURA GPC tubing guide	16 sample loops (1 ml each)
Column	BioBeads SX-3

Sugar system for the determination of sugar monomers

Honey and its substitutes

- Differentiate between natural honey and possible substitutes of food industry
- Determination of sugar monomers like fructose (1), glucose (2), sucrose (3) and maltose (4)
- Highest reproducibility in shortest time



Overlay of 12 replicates of the sugar standards (A) and different honey and honey substitute samples (B).



HILIC amino phase for fast and high resolution separation of sugars.



Devices	Key features
AZURA Pump P 6.1L	LPG pump, 0.001-10 ml/min, sst, max. 700 bar
AZURA Detector RID 2.1L	Refractive index detector, max. 5 bar, max. 100 Hz
AZURA Column Thermostat CT 2.1	Forced air column thermostat, 5 - 85 °C, 2 °C/min
AZURA Valve V 2.1S	6 port 2 pos injection valve, 1/16", sst, 400 bar
Vertex Plus column Eurospher II NH2	150x4 mm, 100 Å, 3 µm



Accessories

AZURA Eluent Tray E 2.1L

The eluent tray E 2.1L for AZURA devices with a capacity of 6 x 1000 ml bottles is stackable onto all AZURA devices. The inlay is removable for cleaning. The eluent tray possesses a drainage system and a removable front that facilitates access to a capillary guide.



AZURA Inlet Tubing Kit with solvent filter

The AZURA Tubing kit with solvent filter (stainless steel, 10 µm) is suitable for all analytical HPLC systems (isocratic, HPG, LPG). The filter can be used with all flow rates of the pump heads provided.



Why should I use safety caps?

- Stop the liquid flow line via stopcocks whenever no flow is delivered. Be safe from eluent loss!
- Filters and air-inlet valves prevent the eluent from evaporating and result in maximized stability of retention times due to stable eluent composition.
- Filters at the waste bottle keep the air around your AZURA system clean.



Technical data

AZURA Pump P 6.1L	Low pressure gradient HPLC Plus	Low pressure gradient UHPLC	High pressure gradient HPLC Plus	High Pressure gradient UHPLC
Max. flow rate	10 ml/min	5 ml/min	10 ml/min	5 ml/min
Flow rate range	0.001 - 10 ml/min	0.001 - 5 ml/min	0.001 - 10 ml/min	0.001 - 5 ml/min
Flow rate increment	0.001 ml/min	0.001 ml/min	0.001 ml/min	0.001 ml/min
Maximum delivery pressure [psi]	10 150 psi	14 500 psi	10 150 psi	14 500 psi
Maximum delivery pressure [bar]	700 bar	1 000 bar	700 bar	1 000 bar
Maximum delivery pressure [MPa]	70 MPa	100 MPa	70 MPa	100 MPa
Pump head materials	Stainless steel	Stainless steel	Stainless steel	Stainless steel
Gradient	Low pressure gradient (quaternary)	Low pressure gradient (quaternary)	High pressure gradient (binary)	High pressure gradient (binary)
Leak management	Yes	Yes	Yes	Yes
Best working conditions	0.1 - 8.0 ml/min	0.02 - 5 ml/min	0.1 - 8.0 ml/min	0.02 - 5 ml/min
Continous working conditions	0.1 - 4.0 ml/min	0.1 - 4.0 ml/min	0.1 - 4.0 ml/min	0.1 - 4.0 ml/min

AZURA Column Thermostat CT 2.1	
Heating and cooling system	microprocessor controlled Peltier element for heating and cooling, fan supported 2-way air circulation
Temperature range	5 - 85 °C
Heating/cooling rate	2 °C/min
Temperature accuracy	± 0.2 °C
Temperature stability	± 0.1 °C
Dimensions, interior	90 x 390 x 47 mm (W x H x D)
Safety	self-check and auto-calibration at power-on, selectable turn-off temperature

AZURA Autosampler AS 6.1L		
Method	HPLC Plus	UHPLC
Autosampler Flow Path	Analytical	Analytical
Maximum back pressure	700 bar	1240 bar
Vial/plate dimensions	max. plate/vial height: 47 mm (incl. septa or capmat)	max. plate/vial height: 47 mm (incl. septa or capmat)
Injection volume range	0.1 µl - 10 ml depending on sample loop	0.1 µl - 10 ml depending on sample loop
Sample loop	100 µl	10 µl
Dispenser syringe	250 µl	250 µl
Headspace pressure	built-in compressore, only for sample vials with septum	built-in compressor, only for sample vials with septum
Switching time inj. valve	< 100 ms	< 100 ms
Piercing needle precision	± 0.6 mm	± 0.6 mm
Sample tray cooling	none	none
Vial detection	missing vial/well plate detection by sensor	missing vial/well plate detection by sensor
Needle wash	programmable: wash between injections and wash between vials	programmable: wash between injections and wash between vials
Wetted materials	Tefzel® (ETFE), Glass, Teflon® (PTFE), Kel-F® (PCTFE), stainless steel, PEEK	Tefzel® (ETFE), Glass, Teflon® (PTFE), Kel-F® (PCTFE), stainless steel, PEEK
Injection modes	full loop filling, partial loop filling and microliter pickup; PASA™ (pressure-assisted sample aspiration)	full loop filling, partial loop filling and microliter pickup; PASA™ (pressure-assisted sample aspiration)
Injection precision	RSD (Relative Standard Deviation): full loop injection: <0.3%partial loop injection at injection volume>5 µl: <0.5%microliter pickup injection at an injection volume>5 µl: <1.0%	RSD (Relative Standard Deviation):full loop filling: <0.3%partial loop injection at injection volumes>5 µl: <0.5%microliter pickup at injections>5 µl: <1.0%
Sample carryover	< 0.05 % with needle washing	< 0.05 % with needle washing
Injections per vial	max. 9 injections	max. 9 injections
Injection cycle time	minimum 7 s from the same vial, 14 s from different vials;< 60 s for>100 µl sample injection in all injection modes, incl. 300 µl needle wash	minimum 7 s from the same vial, 14 s from different vials;< 60 s for>100 µl sample injection in all injection modes, incl. 300 µl needle wash
Analysis time	max. 9 h, 59 min, 59 s	max. 9 h, 59 min, 59 s
Tray Tempering	Optional (4-40°C)	Optional (4-40°C)

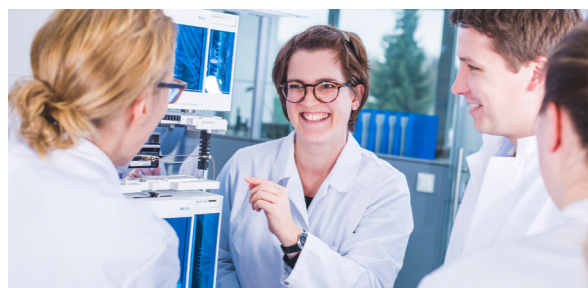
Technical data

AZURA Detector	DAD 2.1L	DAD 6.1L
Detector type	Diode array detector	Diode array detector
Number of diodes	256	1024
Pixel pitch	2 nm/diode	0.8 nm/diode
Detection channels	8 (Digital)/4 (Analog)	8 (Digital)/4 (Analog)
Light source	Deuterium (D ²) lamp with integrated GLP chip	High brightness deuterium (D ²) lamp and halogen lamp with integrated GLP chip
Wavelength range	190 - 700 nm	190 - 1000 nm
Spectral bandwidth	<10 nm at Ha line (FWHM) /Note: digital bandwidth 1 - 32 nm	< 3.5 nm at Ha line (FWHM) /Note: digital bandwidth 1 - 32 nm
Wavelength accuracy	± 1 nm	± 1 nm
Noise	± 5 µAU at 254 nm	± 3.5 µAU at 254 nm
Drift	400 µAU/h at 254 nm	300 µAU/h at 254 nm
Linearity	> 2.0 AU at 274 nm	> 2.5 AU at 274 nm
Maximum data rate	100 Hz (LAN)/12.5 Hz (analog)	100 Hz (LAN)/12.5 Hz (analog)
Flow cell	Not included (see Accessories / Spare parts)	Not included (see Accessories / Spare parts)
Time constants	0.00 / 0.01 / 0.02 / 0.05 / 0.1 / 0.2 / 0.5 / 1.0 / 2.0 / 5.0 / 10.0 s	0.00 / 0.01 / 0.02 / 0.05 / 0.1 / 0.2 / 0.5 / 1.0 / 2.0 / 5.0 / 10.0 s
Integration time	Automatic	Automatic

AZURA Detector	MWD 2.1L	UVD 2.1L	UVD 2.1S
Detector type	Variable multiwave-length detector	Variable single wave-length UV detector	Variable single wave-length UV detector
Detection channels	8 (Digital)/4 (Analog)	1	1
Light source	Deuterium (D ²) lamp with integrated GLP chip	Deuterium (D ²) lamp with integrated GLP chip	Deuterium (D ²) lamp with integrated GLP chip
Wavelength range	190 - 700 nm	190 - 750 nm	190 - 500 nm
Spectral bandwidth	< 10 nm at Ha line (FWHM) /Note: digital bandwidth 1 - 32 nm	11 nm at Ha line (FWHM)	13 nm at Ha line (FWHM)
Wavelength accuracy	± 1 nm	± 2.5 nm	± 3 nm
Noise	± 5 µAU at 254 nm	± 1.5 x 10 ⁻⁵ AU at 254 nm (ASTM E1657-98)	± 2.0 x 10 ⁻⁵ AU at 254 nm (ASTM E1657-98)
Drift	400 µAU/h at 254 nm	3.0 x 10 ⁻⁴ AU/h at 254 nm (ASTM E1657-98)	3.0 x 10 ⁻⁴ AU/h at 254 nm (ASTM E1657-98)
Linearity	> 2.0 AU at 274 nm	> 2.0 AU at 270 nm (ASTM E1657-98)	> 2.0 AU at 270 nm (ASTM E1657-98)
Maximum data rate	100 Hz (LAN)/12.5 Hz (analog)	50 Hz (LAN)/20 Hz (Analog)	50 Hz (LAN)/20 Hz (Analog)/10 Hz (RS-232)
Flow cell	Not included	Not included	Not included
Time constants	0.00 / 0.01 / 0.02 / 0.05 / 0.1 / 0.2 / 0.5 / 1.0 / 2.0 / 5.0 / 10.0 s	0.0 / 0.1 / 0.2 / 0.5 / 1.0 / 2.0 / 5.0 / 10.0 s	0.00 / 0.02 / 0.05 / 0.1 / 0.2 / 0.5 / 1.0 / 2.0 s

AZURA Detector	RID 2.1L
Detector type	Refractive index detector
Light source	Long-life LED
Detection channels	1
Refractive index range	1.00 - 1.75 RIU
Noise	± 2.5 nRIU
Drift	200 nRIU/h
Linearity	> 1000 µRIU
Flow cell	5 bar back pressure resistance Flow cell included
Maximum flow rate	10 ml/min (pure water)
Flow cell volume	15 µl
Wetted materials	Stainless steel / fused silica / PTFE / PEEK
Temperature control	OFF, 30 - 55 °C (1 °C increment)
Time constants	0.00 / 0.01 / 0.02 / 0.05 / 0.1 / 0.2 / 0.5 / 1.0 / 2.0 / 5.0 / 10.0 s
Maximum data rate	100 Hz (LAN)/20 Hz (Analog)

Science Together



Based in Berlin, KNAUER is a medium-sized, owner-managed company that has been serving the sciences since 1962. We develop and manufacture scientific instruments of superior quality for liquid chromatography. The range includes sys-

Independent and family owned



The founder Dr. Herbert Knauer and his wife Roswitha are still active as advisers in the company to this day. The couple's daughter, Alexandra Knauer, has been managing director and

owner of the company since 2000. Several awards for outstanding products and innovations as well as entrepreneurial excellence make KNAUER a „leading employer“.



Worldwide partner in science since 1962



We separate molecules and unite people.

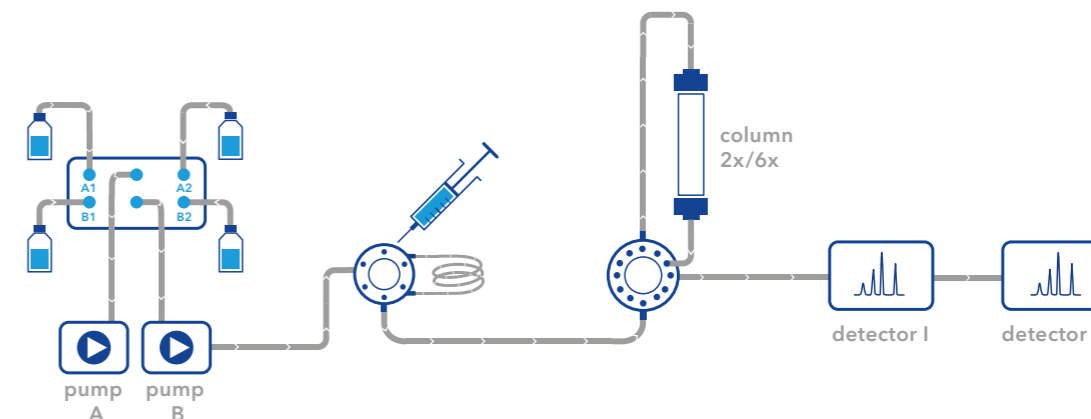
www.knauer.net



System configurator HPLC/UHPLC by KNAUER

MAKE YOUR PRESELECTION

- UHPLC**
(SST, max. 1000 bar)
- HPLC**
(SST, max. 700 bar)
- Bio-Inert**
(metal-free, max. 400 bar)



ELUENT SELECTION & DELIVERY

- 5 ml/min binary gradient pump P 6.1L (UHPLC)
- 5 ml/min quaternary gradient pump P 6.1L (UHPLC)
- 10 ml/min binary gradient pump P 6.1L
- 10 ml/min quaternary pump P 6.1L
- x solvent selection valve (6 further inlets)

SAMPLE INJECTION

- Manual injection valve
- Autosampler AS 6.1L
- Autosampler AS 6.1L cool/heat

COLUMN SELECTION & THERMOSTAT

- 2 columns
- 6 columns
- Column thermostat
- Column kit HPLC
- Column kit UHPLC
- Precolumn heater 0.1 mm ID UHPLC
- Precolumn heater 0.18 mm ID HPLC

DETECTION

- UV/VIS single wavelength
- UV/VIS multiple wavelength
- Conductivity
- pH
- Refractive index
- Light Scattering
- A/D-converter (integration of further detectors)
- DAD 2.1L
- DAD 6.1L
- MSQ Microsaic
- Fluorescence Detector RF-20 A
- Fluorescence Detector RF-20 Axs

ACCESSORIES

- 0.1 mm tubing
- 0.18 mm tubing
- PEEK tubing
- x Back pressure regulator
- Workstation (Windows)

FLOW CELLS FOR UV-DETECTOR

- 10 mm/10 µl Pressure proof
- 10 mm/2 µl LightGuide®
- 50 mm/6 µl LightGuide®
- 3 mm/2 µl (up to 100 ml/min) Pressure proof

SOFTWARE

- ClarityChrom®
- OpenLAB®
- Chromeleon™
- Mobile Control

COMMON APPLICATIONS

- Reversed phase
- Normal phase
- other...
- System Qualification

Analytical
HPLC

Multi-Column
Chromatography,
SMB

Preparative
HPLC

FPLC

Osmometry

Dosing,
Metering,
Pumping

Detection

Technical data or prices are subject to change without notice. Prices may vary by country and do not include taxes, customs duties or delivery.

All trademarks are the property of their respective owners. Our general terms and conditions apply: www.knauer.net/terms

Distributed by:



Equipements Scientifiques et
Consommables de Laboratoire

www.labtech.com.tn

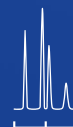
@ : contact@labtech.com.tn

☎ : (+216) 71 483 166 / 188

KNAUER

Wissenschaftliche Geräte GmbH
Hegauer Weg 38
14163 Berlin, Germany

+49 30 809727-0
+49 30 8015010 (Fax)
info@knauer.net
www.knauer.net



KNAUER